

CATALOGUE NO. 1307.1

EMBARGO: 11:30 AM (CANBERRA TIME) FRI 29 NOV 1996

**ECONOMIC INDICATORS, NEW SOUTH WALES
NOVEMBER 1996**

MAIN FEATURES**EMPLOYMENT**

The seasonally adjusted number of employed persons in NSW was 2,815,900 in October 1996, an increase of 0.9% on the previous month. Nationally, employment rose by 0.3% over the same period.

UNEMPLOYMENT

The seasonally adjusted number of unemployed persons in NSW was 240,300 in October 1996, a fall of 2.7% on the previous month, but 4.7% higher than in October 1995. The seasonally adjusted unemployment rate in October 1996 was 7.9% in NSW and 8.8% nationally.

**NEW MOTOR VEHICLE
REGISTRATIONS**

In seasonally adjusted terms, new motor vehicle registrations in NSW increased by 5.5% from 17,920 in August 1996 to 18,905 in September 1996.

BUILDING APPROVALS

The seasonally adjusted number of new dwelling units approved in NSW in September 1996 was 3,258, a decrease of 4.7% on the previous month and 10.0% lower than in September 1995.

FINANCE

The value of housing finance commitments for owner occupation in NSW in September 1996 fell by 1.9% from August 1996, but rose 25.0% from September 1995.

NOTES

This publication provides information on a wide range of economic indicators which are the latest available at the time of publication. In a number of cases, figures appearing in this summary are preliminary and are subject to revision in subsequent issues.

For detailed explanatory notes and definitions for the items shown in this publication, readers are referred to the specific ABS publications.

Current publications produced by the ABS are listed in the *Catalogue of Publications* (1101.0). A *Release Advice* (1105.0) is issued on Tuesdays and Fridays which lists publications to be released in the next few days. These publications are available from any ABS office.

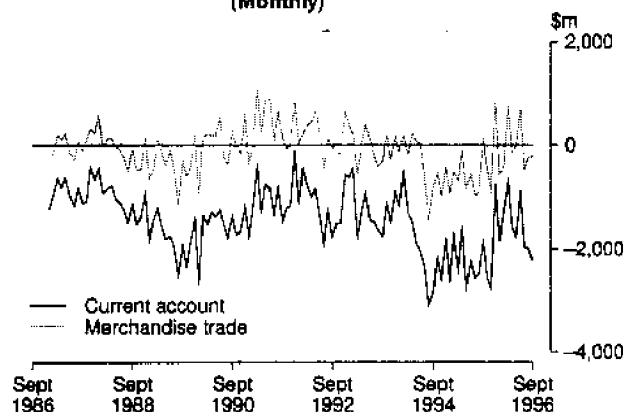
Gregory W. Bray
Regional Director
New South Wales

INQUIRIES:

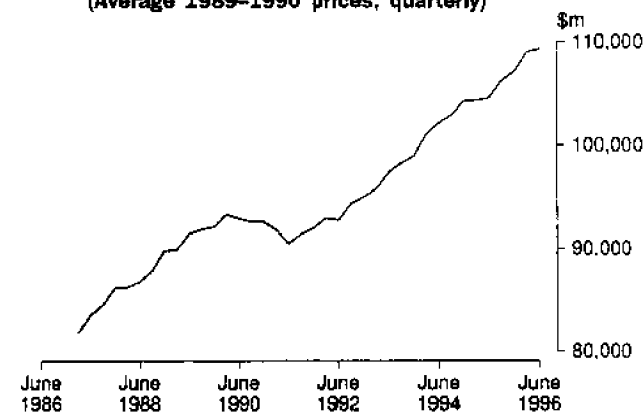
- *for further information about statistics in this publication and the availability of related unpublished statistics*, contact Bill Markham on Sydney (02) 9268 4376 or any ABS office.
 - *for information about other ABS statistics and services* please contact Information Services on Sydney (02) 9268 4611 or any ABS office.
-

Indicator	Unit	Latest period	Change over prior period	Change over year			
National accounts percentage change, average 1989-90 prices, (seasonally adjusted)—							
Gross non-farm product	%	Jun qtr 96	0.4	3.8			
Gross domestic product	%	Jun qtr 96	0.3	4.5			
Figures for preceding periods							
Indicator	Unit	Latest period	Latest figure	One period ago	Two periods ago	Three periods ago	Figure one year ago
Balance of payments—							
Merchandise exports	\$m	Sep 96	6 198	6 334	6 480	6 295	6 230
Merchandise imports	\$m	Sep 96	-6 389	-6 565	-6 945	-5 571	-6 115
Balance on merchandise trade	\$m	Sep 96	-191	-231	-465	724	115
Balance on goods and services	\$m	Sep 96	-563	-402	-400	588	-291
Balance on current account	\$m	Sep 96	-2 229	-1 985	-1 945	-878	-1 831
Balance on current account (seasonally adjusted)	\$m	Sep 96	-1 690	-1 470	-1 315	-1 016	-1 626
Terms of trade for goods and services—							
Index (seasonally adjusted)	1989-90 =100	Jun qtr 96	97.8	95.9	94.0	94.0	93.0
Exchange Rates at end of period—							
\$US/\$A		Sep 96	0.7924	0.7909	0.7731	0.7890	0.7550
Trade weighted index of value \$A	May 1970 =100	Sep 96	58.5	57.9	56.5	58.1	53.8
Indicator Lending Rate—							
Bank loans to large businesses (Source: Reserve Bank)	%	Oct 96	10.25	10.25	10.40	10.80	10.70

**BALANCE OF PAYMENTS
AUSTRALIA
(Monthly)**

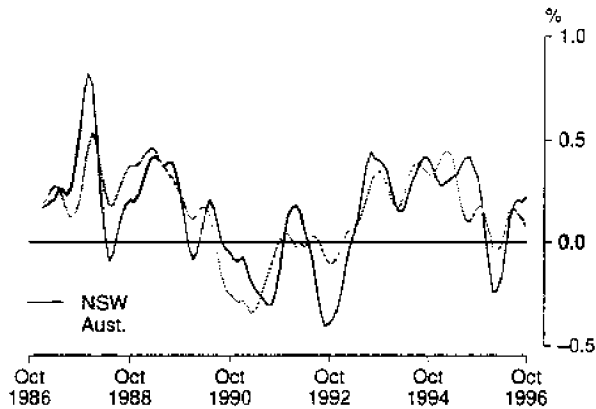


**GROSS DOMESTIC PRODUCT, AUSTRALIA
SEASONALLY ADJUSTED
(Average 1989-1990 prices, quarterly)**

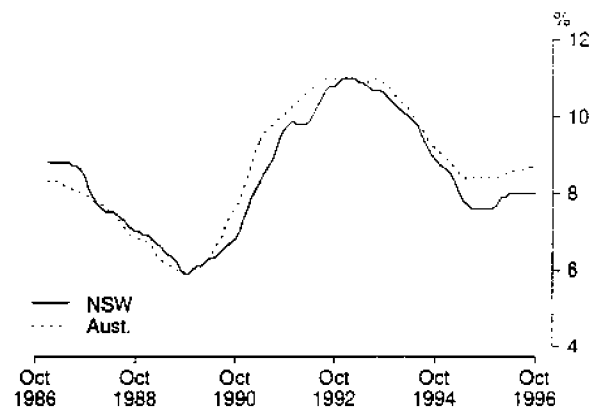


Indicator	Latest period	NSW	Vic.	Qld	SA	WA	Tas.	Aust.
		%	%	%	%	%	%	%
Unemployment rate (seasonally adjusted)	Oct 96	7.9	9.5	10.1	9.4	7.6	10.7	8.8
Percentage change from previous year—								
Employed persons	Oct 96	0.9	2.2	2.4	1.3	1.8	-0.8	1.6
Consumer price index: all groups	Sep qtr 96	2.5	1.7	2.3	1.7	2.3	2.3	2.1
Average weekly employee earnings: full-time adult ordinary time (trend estimates)	Aug qtr 96	4.3	2.8	2.9	3.5	4.9	4.4	3.7
Retail turnover (trend estimates)	Sep 96	6.0	2.8	4.4	-0.2	-0.6	1.6	3.6
New motor vehicle registrations	Sep 96	6.1	3.5	3.6	-0.4	7.1	7.0	3.7
Dwelling units approved	Sep 96	-9.3	-16.9	2.6	-13.2	-14.2	-36.5	-9.5
Value of non-residential building approved	Sep 96	83.3	-23.1	18.1	90.0	16.3	-44.7	31.7
Value of all buildings approved	Sep 96	22.7	-17.6	9.4	28.3	0.8	-37.7	8.4
Value of engineering construction work done	Jun qtr 96	2.1	-5.8	2.3	11.5	79.2	0.6	10.4
Room occupancy rate in licensed hotels and motels etc.	Jun qtr 96	1.4	4.7	-3.7	2.8	-1.6	-3.5	0.0
Actual private new capital expenditure	Jun qtr 96	18.0	18.8	13.8	3.7	23.3	-26.7	18.5

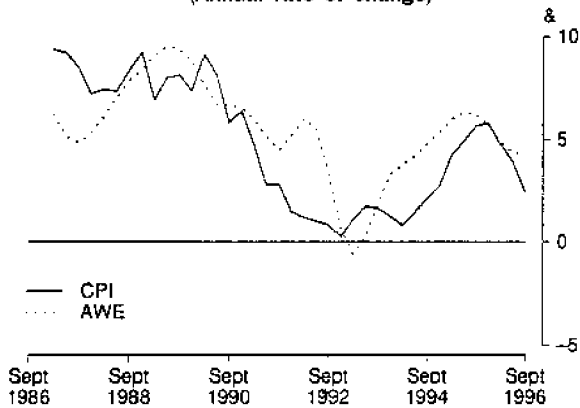
MONTHLY CHANGE IN NUMBER OF PERSONS EMPLOYED
(Trend)



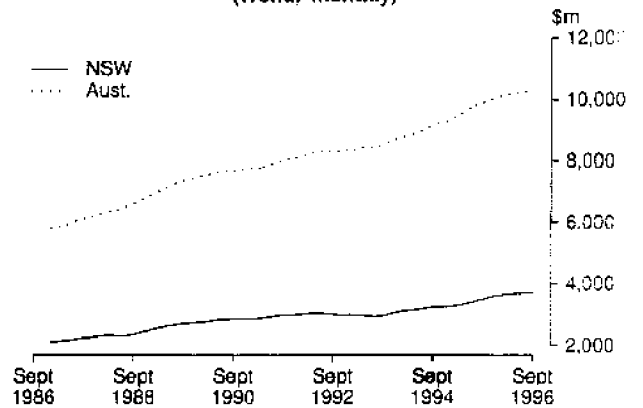
UNEMPLOYMENT RATE
(Trend)



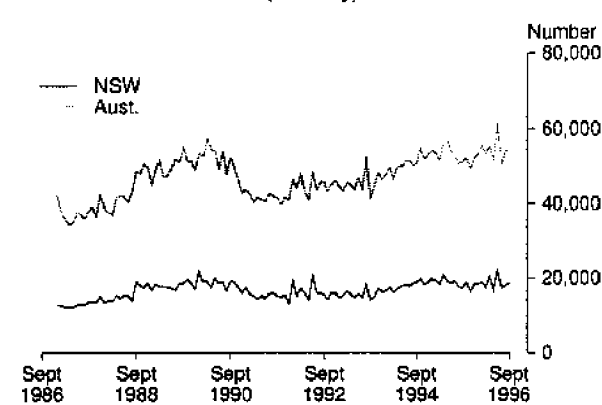
PRICES AND EARNINGS, NSW
(Annual rate of change)



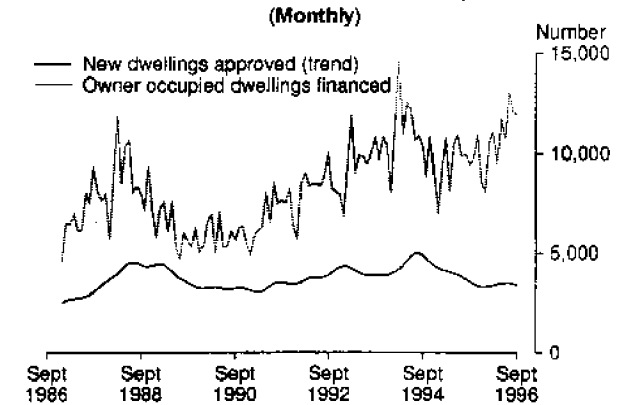
RETAIL TURNOVER
(Trend, monthly)



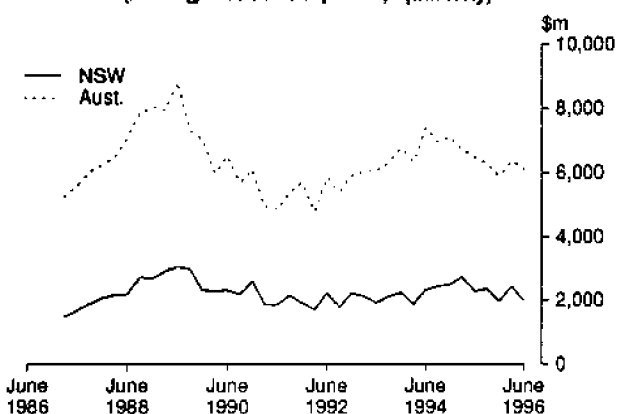
NEW MOTOR VEHICLES REGISTERED
(Monthly)



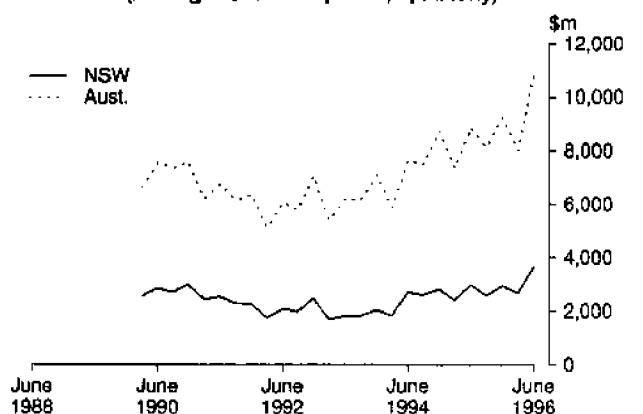
NEW DWELLINGS APPROVED AND HOUSING FINANCE COMMITMENTS, NSW
(Monthly)



VALUE OF ALL BUILDINGS COMMENCED
(Average 1989-90 prices, quarterly)



PRIVATE NEW CAPITAL EXPENDITURE
(Average 1989-90 prices, quarterly)



Indicator	Unit	Latest period	New South Wales			Australia		
			Latest figure	Change from prior period	Change from same period prior year	Latest figure	Change from prior period	Change from same period prior year
				%	%		%	%
Population								
Estimated resident population	'000	Mar qtr 96	6 173	0.34	1.29	18 239	0.39	1.36
Civilian population aged 15 years and over	'000	Oct 96	4 891	0.12	1.57	14 424	0.13	1.65
Labour Force								
Employed persons—full-time (original series)	'000	Oct 96	2 159	0.5	1.0	6 305	0.1	1.0
—total (original series)	'000	Oct 96	2 819	0.2	0.9	8 393	-0.4	1.6
—total (seasonally adjusted)	'000	Oct 96	2 816	0.9	0.9	8 373	0.3	1.6
Unemployed persons—(original series)	'000	Oct 96	233	-6.5	4.9	765	-4.4	3.5
—(seasonally adjusted)	'000	Oct 96	240	-2.7	4.7	807	1.0	3.4
Labour force (seasonally adjusted)	'000	Oct 96	3 056	0.6	1.2	9 179	0.4	1.7
Participation rate (seasonally adjusted)	%	Oct 96	62.5	0.5	-0.4	63.6	0.2	0.1
Unemployment rate (seasonally adjusted)	%	Oct 96	7.9	-2.5	3.9	8.8	0.6	1.6
Job vacancies	'000	Aug 96	25	2.9	-21.3	64	18.5	2.4
Weekly paid overtime per employee (a)	hours	Aug 96	6.8	-10.4	-2.2	6.8	-7.0	-0.6
Average Weekly Employee Earnings								
Full-time adult ordinary time earnings (trend estimates)	\$	Aug 96	713.40	1.4	4.3	677.90	1.0	3.7
All employees total earnings (trend estimates)	\$	Aug 96	610.70	1.6	5.5	569.20	0.9	3.3
Industrial Disputes—Working days lost								
	'000	Aug 96	19.9	-58.9	49.5	119.2	-13.4	174.6
Consumer Price Index, All Groups 1989-90 = 100		Sep qtr 96	120.2	0.3	2.5	120.1	0.3	2.1
Retail Turnover (trend estimates)	\$m	Sep 96	3 716	0.1	6.0	10 261	0.0	3.6
New Motor Vehicle Registrations (seasonally adjusted)								
Passenger vehicles (seasonally adjusted)	No.	Sep 96	18 905	5.5	8.0	54 308	0.2	5.8
Other motor vehicles (excl. motor cycles) (seas. adj.)	No.	Sep 96	16 147	6.4	8.7	45 269	1.3	6.0
		Sep 96	2 759	0.7	3.7	9 039	-4.9	4.6
Production								
Clay bricks (seasonally adjusted) (b)	million	Sep 96	55	2.5	-6.2	125	5.6	-5.6
Electricity (seasonally adjusted)	million kWh	Sep 96	5 330	4.9	2.2	13 911	2.3	0.3
Gas (seasonally adjusted) (b)	terajoules	Sep 96	8 922	-3.7	2.3	50 874	-3.0	1.9
Overseas Trade								
Imports	\$m	Sep 96	2 812	-6.3	-1.6	6 275	-7.1	0.0
Exports, Australian produce	\$m	Sep 96	1 498	9.7	14.0	5 935	-2.2	-0.2
Tourism								
Overseas visitor short-term arrivals	'000	Aug 96	139	-4.5	7.7	329	-8.1	8.0
Resident overseas short-term departures	'000	Aug 96	89	-2.9	10.7	222	-6.1	12.6
Licensed hotels, motels etc. with facilities—								
Guest nights	'000	Jun qtr 96	5 200.3	-8.2	3.2	15 050.4	-6.5	3.2
Room occupancy rate	%	Jun qtr 96	57.4	-6.1	1.4	56.1	-4.9	0.0
Building								
Approvals—								
Dwelling units (seasonally adjusted)	No.	Sep 96	3 258	-4.7	-10.0	9 861	-8.6	-9.5
Value of new residential building (seasonally adj.)	\$m	Sep 96	325	-12.8	-11.1	945	-13.5	-9.0
Value of non-residential building	\$m	Sep 96	468	-2.4	83.3	1 139	0.5	31.7
Value of all building	\$m	Sep 96	926	-0.2	22.7	2 328	-4.9	8.4
Commencements —								
New dwelling units	No.	Jun qtr 96	9 883	-0.2	-18.8	29 969	5.4	-17.1
Value of new residential buildings (c)	\$m	Jun qtr 96	991	-11.1	-17.7	2 907	2.4	-13.4
Value of non-residential building (c)	\$m	Jun qtr 96	770	-30.6	-8.4	2 640	-13.9	2.7
Value of all building (c)	\$m	Jun qtr 96	1 991	-18.2	-12.8	6 115	-4.0	-5.7
Value of work done in period (c)	\$m	Jun qtr 96	2 269	8.3	-10.4	6 256	8.8	-9.5
Engineering Construction								
Private contractors—								
Value of work commenced	\$m	Jun qtr 96	368	-27.8	-13.7	1 855	-43.2	16.8
Value of work done	\$m	Jun qtr 96	581	8.8	0.8	2 197	18.1	28.8
Value of work yet to be done	\$m	Jun qtr 96	813	-17.2	-42.4	4 760	-5.6	30.9
Value of work done by public sector	\$m	Jun qtr 96	855	24.3	3.0	1 918	22.1	-5.1
Finance								
Housing finance for owner occupation—secured commitments to individuals by significant lenders	\$m	Sep 96	1 684	-1.9	25.0	4 299	-1.0	13.9
Personal finance commitments—significant lenders	\$m	Sep 96	993	-2.5	19.3	2 747	-1.5	10.9
Commercial finance commitments—significant lenders	\$m	Sep 96	5 481	4.5	3.9	10 944	-1.3	1.5
Savings balances at end of month—								
All banks (d) (Source: Reserve Bank)	\$m	Aug 96	131 203	-0.3	(e)	289 849	0.0	10.4
Building societies	\$m	Sep 96	4 025	0.7	14.8	12 331	0.8	11.8
Credit unions	\$m	Sep 96	6 187	1.0	8.5	14 141	1.0	9.9
Actual New Fixed Capital Expenditure (f)								
New buildings and structures	\$m	Jun qtr 96	3 761	34.6	18.0	11 129	33.4	18.5
Equipment, plant and machinery	\$m	Jun qtr 96	923	42.9	82.2	3 373	52.7	47.5
		Jun qtr 96	2 838	32.1	5.9	7 756	26.5	9.2

(a) Average weekly overtime hours for those employees who were paid for overtime. (b) Includes Australian Capital Territory. (c) Average of 1989-90 prices. (d) Average of weekly deposit balances. (e) Not available due to revisions only being done nationally. (f) By private enterprises



2130710011961

ISSN 1031-8534